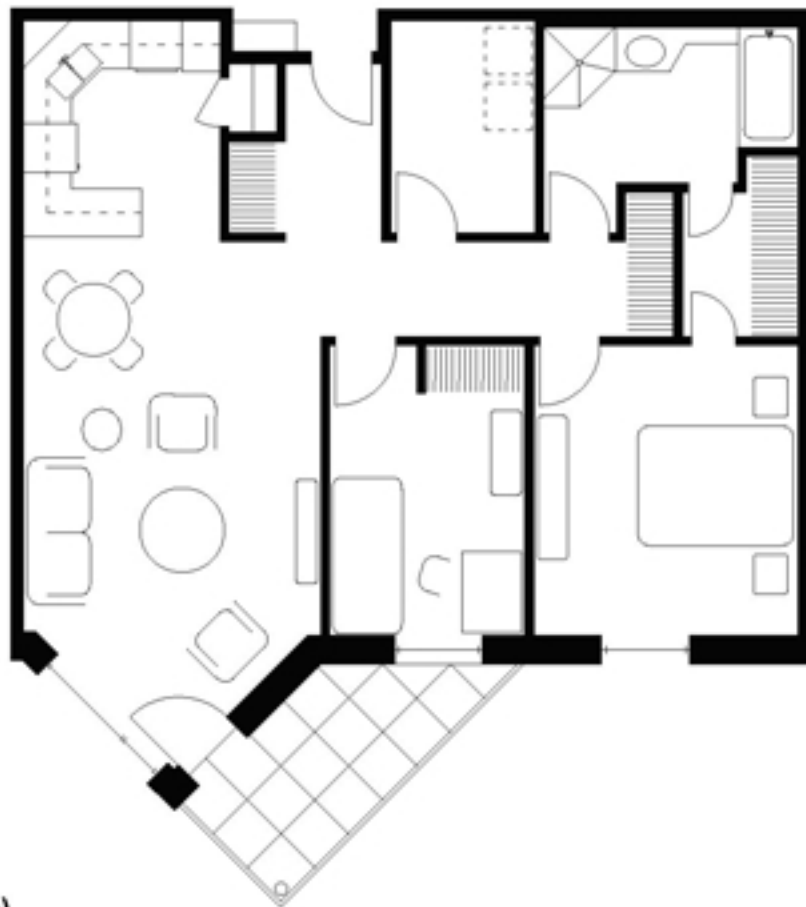


RIVERBEND PLAZA  
400 OSBORNE STREET  
MEETING THE NEEDS OF ACTIVE SENIORS

---



**Unit A (7 Units)**

- One bedroom + den apartments
- 900 sq.ft. plus balcony

Living/Dining	12'-3" x 21'-0"
Kitchen	8'-2" x 9'-0"
Master Bedroom	11'-0" x 12'-1"
Bedroom/Den	8'-1 1/2" x 9'-9"
Bathroom	10'-7" x 6'-6"
Storage	6'-0" x 8'-10"
Foyer	4'-0" x 7'-3"
Balcony	12'-0" x 6'-0"